

Rail Facilities Portal for terminals on RFC North Sea-Baltic

Erik Nieuwenhuis

RAG/TAG meeting
March 16th, 2023, Riga



Funded by the
European Union

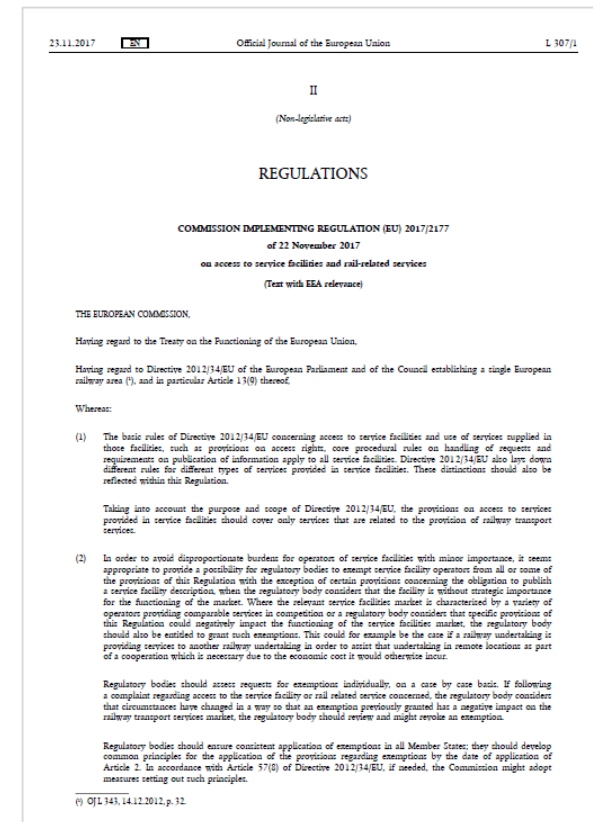


Agenda

1. Obligations for terminals from the Implementing Regulation (EU) 2017/2177
2. Obligations for RFCs from the Regulation (EU) 913/2010
3. Discrepancies of terminal data on RFC NS-B
4. Introduction to Rail Facilities Portal (RFP)
5. Benefits of Rail Facilities Portal for terminals
6. Moving Forward: Extending value to stakeholders of the Corridors

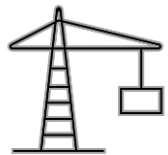
Implementing Regulation (EU) 2177/2017 obliges terminal operators to make available detailed information about their facilities

- Implementing Regulation (EU) 2017/2177 describes the details of the procedure and criteria to be followed for access to the rail-related services to be supplied in the service facilities following the Directive 2012/34 for a single European railway area.
- Operators of service facilities shall establish a **service facility description** for the service facilities and services for which they are responsible - Art. 4 (1). Operators of service facilities shall **keep the service facility description up-to-date**, as necessary - Art. 5 (3).
- Operators of service facilities shall **make publicly available the service facility description free of charge**, in one of the following ways - Art. 5 (1):
 - by publishing it on their **web portal or a common web portal** and providing the infrastructure managers with a link to be included in the network statement;
 - by providing the infrastructure managers with the relevant and ready-to-be-published information to be included in the **network statement**.



Click [here](#) to access the regulation.

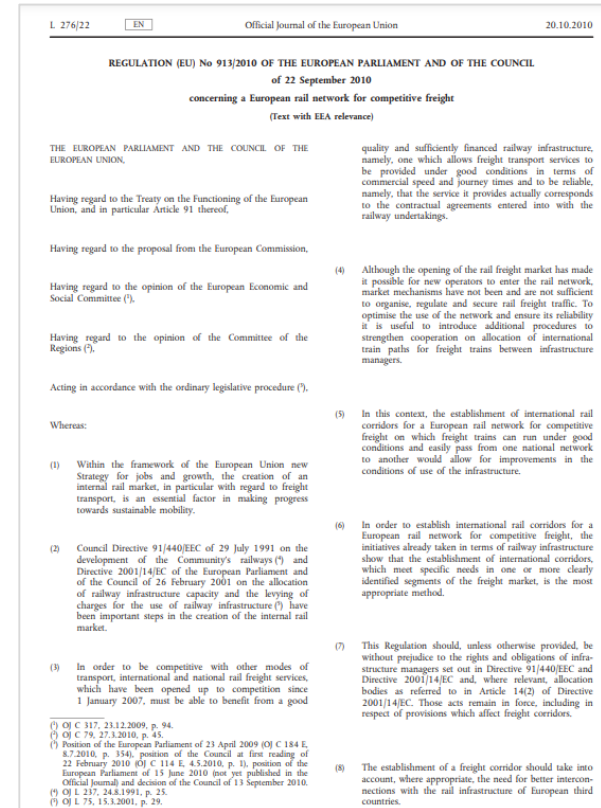
Implementing Regulation (EU) 2177/2017 defines the mandatory components of the terminal description



- According to Art. 4 (2), the service facility description should include :
 - ✓ The list of all installations in which rail related services are supplied, including information on their locations and opening hours
 - ✓ The details of the selection procedure which shall be transparent and non-discriminatory and consider the objective of ensuring an optimum effective use of the capacity of the facility
 - ✓ Key contact details of the operator of the service facility
 - ✓ Main characteristics of the technical equipment of the service facility
 - ✓ Services that are related to the provision of railway transport services and their charges
 - ✓ Information on procedures for requesting access to the service facility (selection criteria, charges, time limits, format and content for requests)
 - ✓ Model access contract and General terms & conditions
 - ✓ Information on changes in technical characteristics and temporary capacity restrictions
 - ✓ Coordination procedure in case of conflicting requests including priority criteria
- More details for each requirement are available in the subsequent Articles of the Regulation.

Regulation (EU) 913/2010 obliges Rail Freight Corridors to regularly publish a list of the terminals along each Corridor



- Regulation (EU) 913/2010 describes the rules for the selection, organization, management and the indicative investment planning of freight corridors in a European rail network for competitive freight.
- The management board **shall draw up, regularly update and publish a document containing [...] the list and characteristics of terminals**, in particular information concerning the conditions and methods of accessing the terminals – Art. 18 (b)
- The RFC NS-B complies with this rule by
 - publishing the **Corridor Information Document (CID) annually with a list of terminals along the Corridor in Annex 3.A**
 - As well as by maintaining the **Customer Information Platform (CIP) which provides information about terminals**.
- The data for these sources is provided by the IMs and includes terminal name, terminal location, handover point and link to terminal description (terminal website or network statement of IM).
- The IMs cannot be held liable for third-party data.



Click [here](#) to access the regulation.

Terminal data on RFC NS-B shows discrepancies between available data sources and prevents transparency for customers

- The number of registered terminals for RFC North Sea-Baltic is varying per data source:

Data source	Rail Facilities Portal		CID TT2024 (Annex 3.A)	
Source description		The Rail Facilities Portal (RFP) shall offer service facility operators a comfortable opportunity to publish information about their facilities in order to comply with the relevant EU regulations and to promote their facilities and services.		The Corridor Information Document (CID) is set up to provide all corridor-related information and to guide all applicants and other interested parties easily through the workings of the Corridor in line with Article 18 of the Regulation.
Link to source	https://railfacilitiesportal.eu/		https://rfc8.eu/cid/tt-2024/	
Terminal definition for data source	rail service facilities such as freight terminals, marshalling yards, maintenance facilities and fueling stations (About Rail Facilities Portal, own website)		installation [...] which has been specially arranged to allow either the loading and/or the unloading of goods onto/from freight trains, and the integration of rail freight services with road, maritime, river and air services, and either the forming or modification of the composition of freight trains; and [...] performing border procedures at borders with European third countries (Article 2.2c of the Regulation (EU) 913/2010, CID TT2024)	
# terminals	90 terminals		256 terminals	

- Each data source covers a different data set per terminal (terminal name, corridor affiliation, opening hours, equipment etc.)

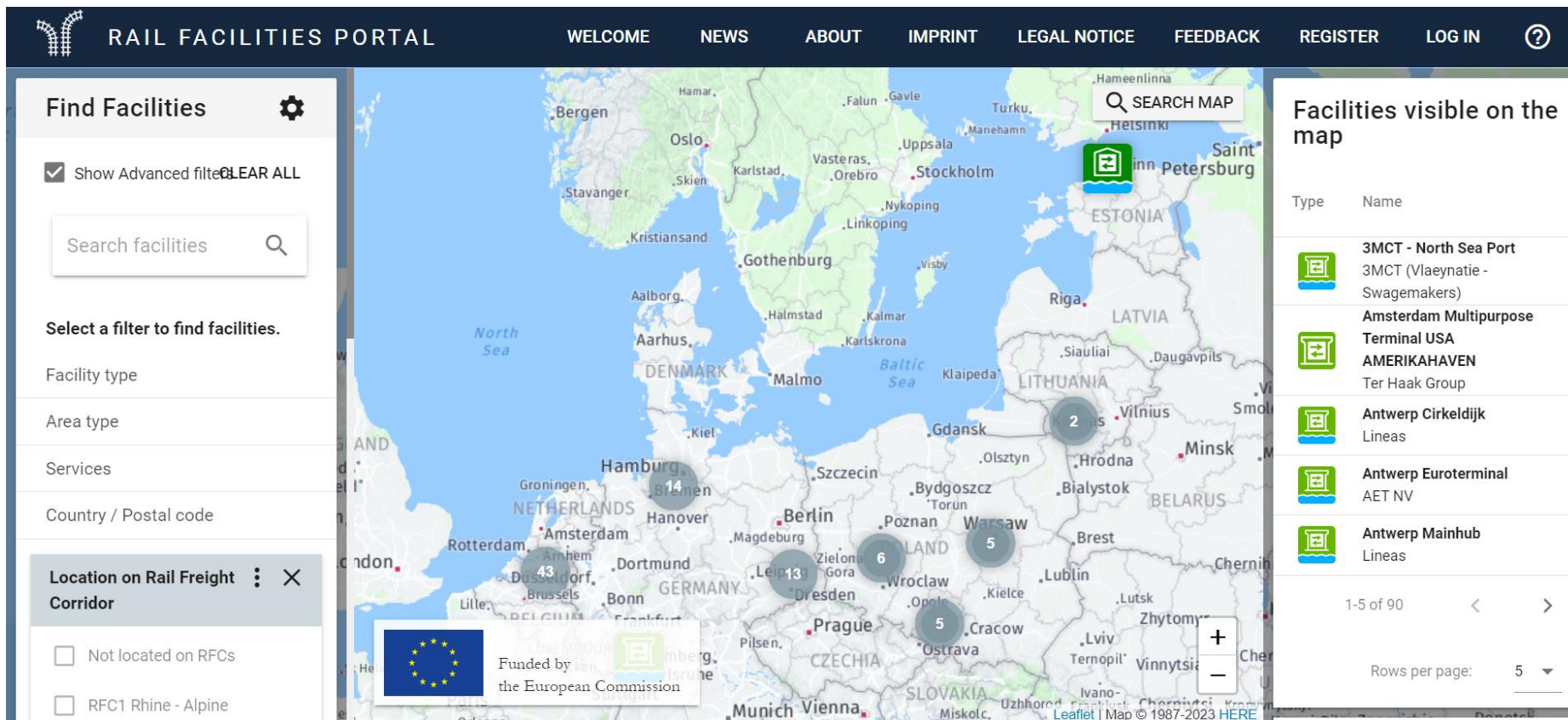
It is recommended that terminals of RFC NS-B update their data in the Rail Facilities Portal (RFP) to centralize available information for customers

- Rail Facilities Portal (RFP) provides **quick and centralized access to information on rail service facilities for customers**
- RFP has been developed under a contract signed by the European Commission and is **coordinated by RailNetEurope (RNE)**
- The operation of RFP belongs to **railway stakeholders who are responsible for uploading and updating the information** and for making the best use of its services. The success of the portal will depend on the quality of information provided through it.
- RFP is selected as **central data source for service facilities in the future RNE IT architecture** via RIS (Rail Infrastructure System)
- Numerous service facilities have registered on RFP and already attract interest from various user groups*:
 - **Total number of visitors:** **30.739**
 - Unique (new) visitors 17.608
 - Returning visitors 11.049
 - Registered visitors 2.082
 - Map interactions: 319.466



*Data collected on February 3rd, 2023

Live Demo of Rail Facilities Portal (RFP)



RAIL FACILITIES PORTAL WELCOME NEWS ABOUT IMPRINT LEGAL NOTICE FEEDBACK REGISTER LOG IN ?

Find Facilities [Settings Icon]

☒ Show Advanced filters **CLEAR ALL**

Search facilities [Search Icon]

Select a filter to find facilities.

- Facility type
- Area type
- Services
- Country / Postal code

Location on Rail Freight Corridor [Close Icon]

- ☐ Not located on RFCs
- ☐ RFC1 Rhine - Alpine

Facilities visible on the map

Type	Name
[Icon]	3MCT - North Sea Port 3MCT (Vlaeynatie - Swagemakers)
[Icon]	Amsterdam Multipurpose Terminal USA AMERIKAHAVEN Ter Haak Group
[Icon]	Antwerp Cirkeldijk Lineas
[Icon]	Antwerp Euroterminal AET NV
[Icon]	Antwerp Mainhub Lineas

1-5 of 90 < >

Rows per page: 5

Funded by the European Commission

Click [here](#) to access the portal.

Rail Facilities Portal (RFP) benefits terminals in several ways



Compliance with EU Jurisdiction

Compliance tool ensuring completeness of legally mandatory information based on Directive 2012/34/EU and Implementing Regulation (EU) 2177/2017



Promotional tool

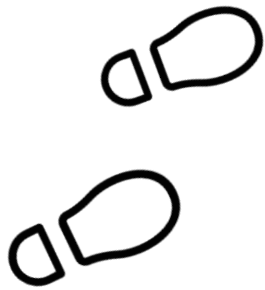
Standardized structure reflecting market needs of customers to boost modal shift



Free of charge and efficient usage

Cheaper than alternative solutions i.e., creating an own website and less effort than creating/using several local or regional portals

Moving Forward: Extending value to stakeholders of the Corridors



Coming soon: Webinar on data maintenance in RFP for terminals

Initiative for improved data quality of terminals might be extended to other RFCs by cooperating with other TAG speakers and C-OSS'

**Additional software developments by RNE for RFP planned
Change requests from all user groups are welcome !**

Your support contacts for updating terminal data in Rail Facilities Portal



Anna Difliff
C-OSS RFC North Sea-Baltic

anna.difliff@deutschebahn.com
+49 1523 7525962

- Contact for general questions on RFP analysis and terminal data
- Feedback on the project or
- if you would like to get involved



Erik Nieuwenhuis
TAG speaker

erik@railterminalrzepin.com
+48 668 569 177

- Promoter for the RFC North Sea - Baltic and getting more terminals on RFP
- Support in data preparation for upload to RFP



Michael Spannlang
Rail Facilities Portal Manager

michael.spannlang@rne.eu
+43 676 60 45 167

- Technical support for RFP incl.
- Data upload to RFP
 - Change requests
 - 1:1 support sessions & RFP trainings